



MKR #425 to MKR #427 -- 06 JUN 23  
 MKR #427 to MKR #436 -- 21 DEC 20  
 MKR #436 to MKR #443 -- 16 FEB 21  
 MKR #443 to MKR #452 -- 14 SEP 22  
 MKR #452 to MKR #463 -- 05 APR 23

**DISCLAIMER**

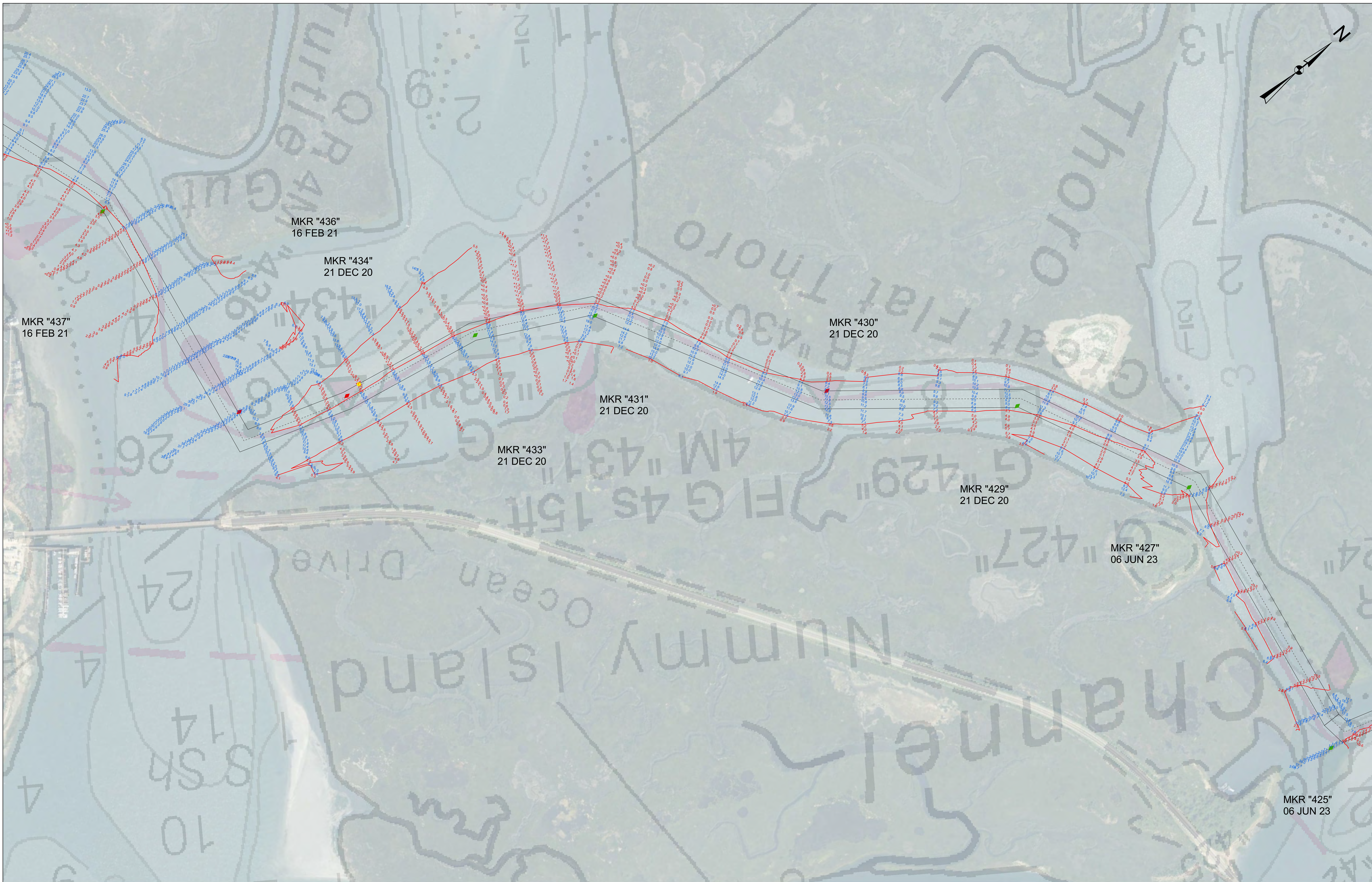
The materials are provided "as is." The government assumes no responsibility for the accuracy or completeness of the information or for the use of the materials, or for any damages, including consequential damages, arising from the use of the materials. The government does not warrant the materials for fitness for particular purposes, nor does it make any representations as to the suitability, accuracy, or completeness of the materials.

The government declines any claim for the use of the materials by others and the government shall not be liable for any damages, including consequential damages, arising from the use of the materials, or for any damages, including consequential damages, arising from the use of the materials.

|  |   |
|--|---|
| Drawing No. _____<br>Plot Scale: _____<br>Approved: _____<br>Checked By: _____<br>E. Anthony _____<br>Surveyed By: _____ | U.S. ARMY CORPS OF ENGINEERS<br>PHILADELPHIA DISTRICT |
|--|---|

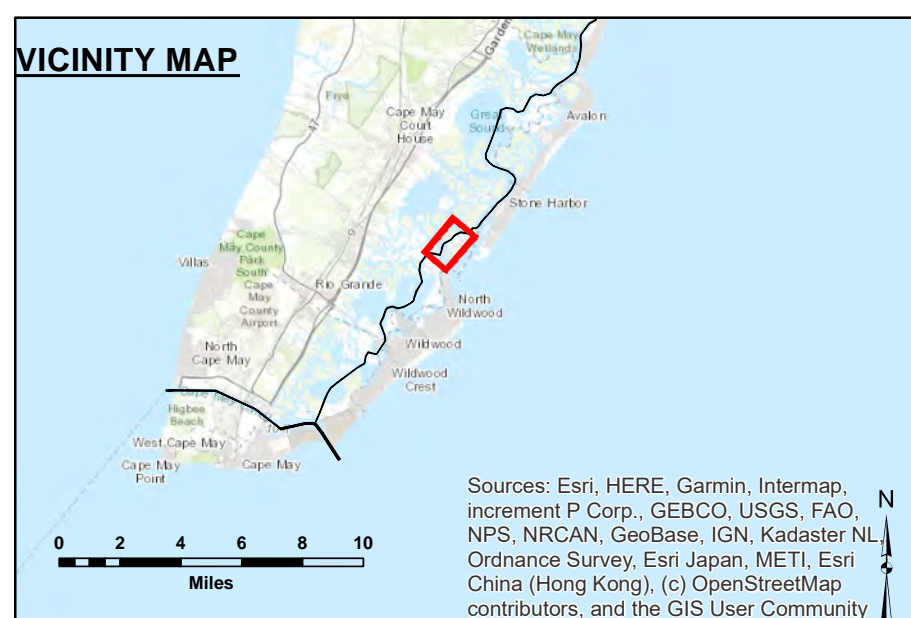
**NEW JERSEY INTRACOASTAL WATERWAY  
MKR #425 TO MKR #463  
EXAMINATION**

IW-13



### Legend

- Shoalest Sounding per Quarter
- ◆ Green Buoy
- ◆ Red Buoy
- 6' Curve of Depth
- Centerline
- ChannelFramework



THIS SURVEY MEETS STANDARDS AS OUTLINED IN CORPS OF ENGINEERS' HYDROGRAPHIC SURVEY MANUAL EM11110-2-1003, DATED NOVEMBER 30, 2013 FOR NAVIGATION AND DREDGING SUPPORT SURVEYS.

HORIZONTAL REFERENCE - NAD 83, NEW JERSEY STATE PLANE, ZONE 2900, U.S. FOOT.

VERTICAL REFERENCE - MEAN LOWER LOW WATER, WHICH IS 2.47' BELOW N.A.V.D. 88.

GEOID 09 AND NOAA TIDAL EPOCH: 1983 - 2001 WERE USED. SOUNDINGS ARE EXPRESSED IN FEET AND TENTHS AND REFER TO MEAN LOWER LOW WATER.

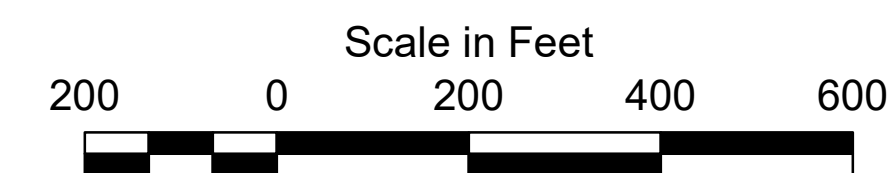
THE INFORMATION DEPICTED ON THIS MAP REPRESENT THE RESULTS OF SURVEYS MADE ON THE DATES INDICATED AND CAN ONLY BE CONSIDERED AS INDICATING THE GENERAL CONDITIONS EXISTING AT THAT TIME.

THE POSITIONS OF THE AIDS TO NAVIGATION ARE PROVIDED FOR INFORMATION ONLY, AND SHOULD NOT BE USED FOR NAVIGATION.

THE LIMITS OF THE FEDERAL CHANNEL DEPICT THE MOST CURRENT FRAMEWORK AVAILABLE WHICH CAN ALSO BE DOWNLOADED HERE:

<http://navigation.usace.army.mil/Survey/Framework>

BASE MAPPING LINEWORK OR ORTHOPHOTOGRAPHY HAS BEEN A VARIETY OF SOURCES AND DATES AND IS INTENDED TO PORTRAY CHARACTERISTICS OF THE SHORELINE AND OTHER FEATURES. TEMPORAL CHANGES MAY HAVE OCCURRED SINCE THIS DATA SET. SOME PARTS OF THE DATA MAY NO LONGER BE AN ACCURATE REPRESENTATION OF SURFACE CONDITIONS.







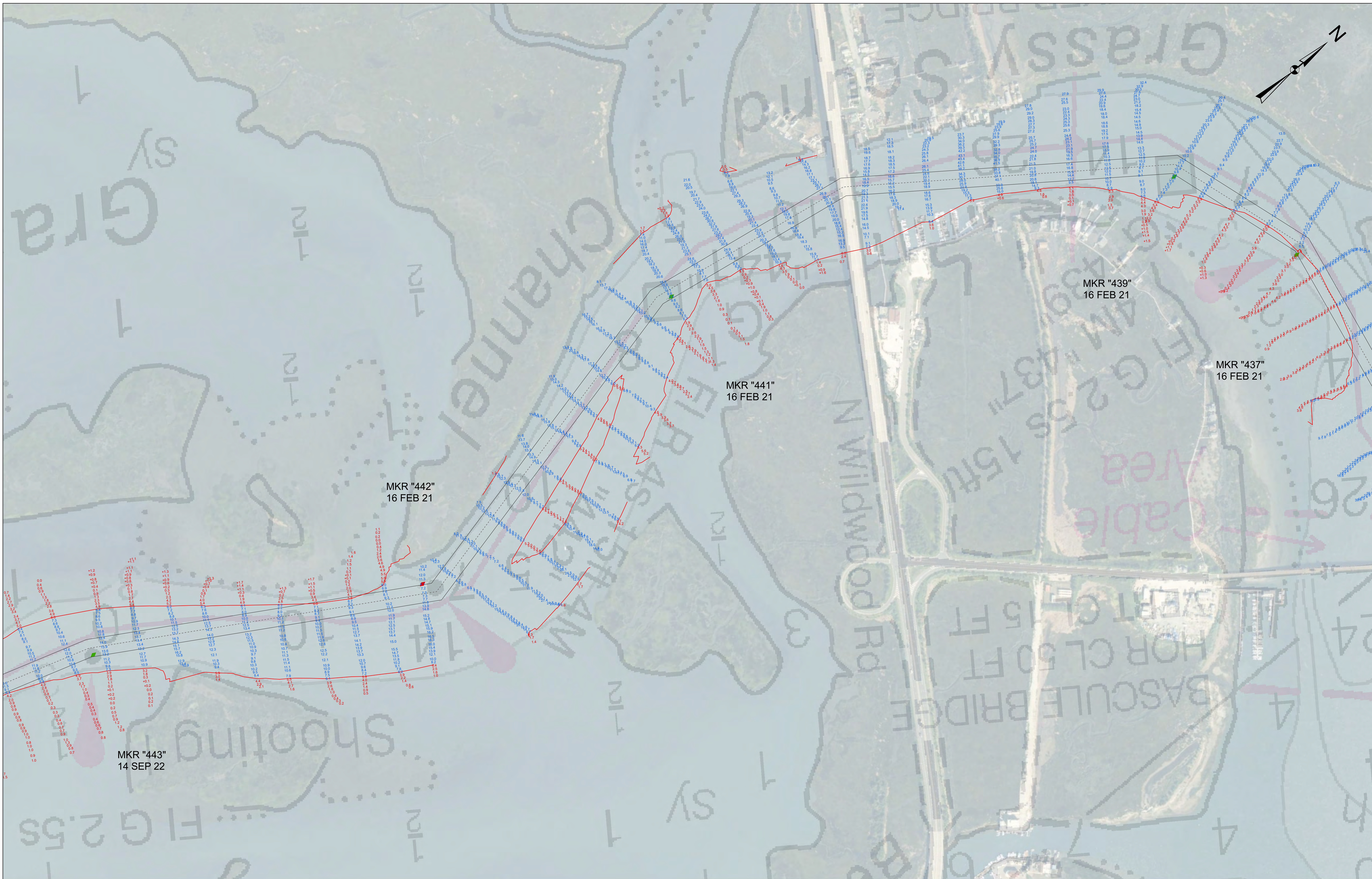
MKR #425 to MKR #427 -- 06 JUN 23  
 MKR #427 to MKR #436 -- 21 DEC 20  
 MKR #436 to MKR #443 -- 16 FEB 21  
 MKR #443 to MKR #452 -- 14 SEP 22  
 MKR #452 to MKR #463 -- 05 APR 23

[illegible]

|   |                   |  |
|---|-------------------|--|
| U.S. ARMY CORPS OF ENGINEERS<br>PHILADELPHIA DISTRICT | Drawing No. _____ | Surveyed By: _____                     |
|   | Plot Scale: _____ | Plotted By: _____<br><b>E. Anthony</b> |
| Approval: _____<br>_____<br>Chief Survey Section      | Checked By: _____ |  |

**NEW JERSEY INTRACOASTAL WATERWAY  
MKR #425 TO MKR #463  
EXAMINATION**

IW-13



## VICINITY MAP



THIS SURVEY MEETS STANDARDS AS OUTLINED IN CORPS OF ENGINEERS' HYDROGRAPHIC SURVEY MANUAL EM1110-2-1003, DATED NOVEMBER 30, 2013 FOR NAVIGATION AND DREDGING SUPPORT SURVEYS

HORIZONTAL REFERENCE - NAD 83, NEW JERSEY STATE PLANE, ZONE 2900, U.S. FOOT.

VERTICAL REFERENCE - MEAN LOWER LOW WATER, WHICH IS 2.47' BELOW N.A.V.D. 88.

GEIOD 09 AND NOAA TIDAL EPOCH: 1983 - 2001 WERE USED. SOUNDINGS ARE EXPRESSED IN FEET AND TENTHS AND REFER TO MEAN LOWER LOW WATER.

THE INFORMATION DEPICTED ON THIS MAP REPRESENT THE RESULTS OF SURVEYS MADE ON THE DATES INDICATED AND CAN ONLY BE CONSIDERED AS INDICATING THE GENERAL CONDITIONS EXISTING AT THAT TIME.

THE POSITIONS OF THE AIDS TO NAVIGATION ARE PROVIDED FOR INFORMATION ONLY, AND SHOULD NOT BE USED FOR NAVIGATION.

THE LIMITS OF THE FEDERAL CHANNEL DEPICT THE MOST CURRENT FRAMEWORK AVAILABLE WHICH CAN ALSO BE DOWNLOADED HERE







<http://navigation.usace.army.mil/Service/Framework>

BASE MAPPING LINEWORK OR ORTHOPHOTOGRAPHY HAS BEEN A VARIETY OF SOURCES AND DATES AND IS INTENDED TO PORTRAY CHARACTERISTICS OF THE SHORELINE AND OTHER FEATURES. TEMPORAL CHANGES MAY HAVE OCCURRED SINCE THIS DATA SET. SOME PARTS OF THE DATA MAY NO LONGER BE AN ACCURATE REPRESENTATION OF SURFACE CONDITIONS.

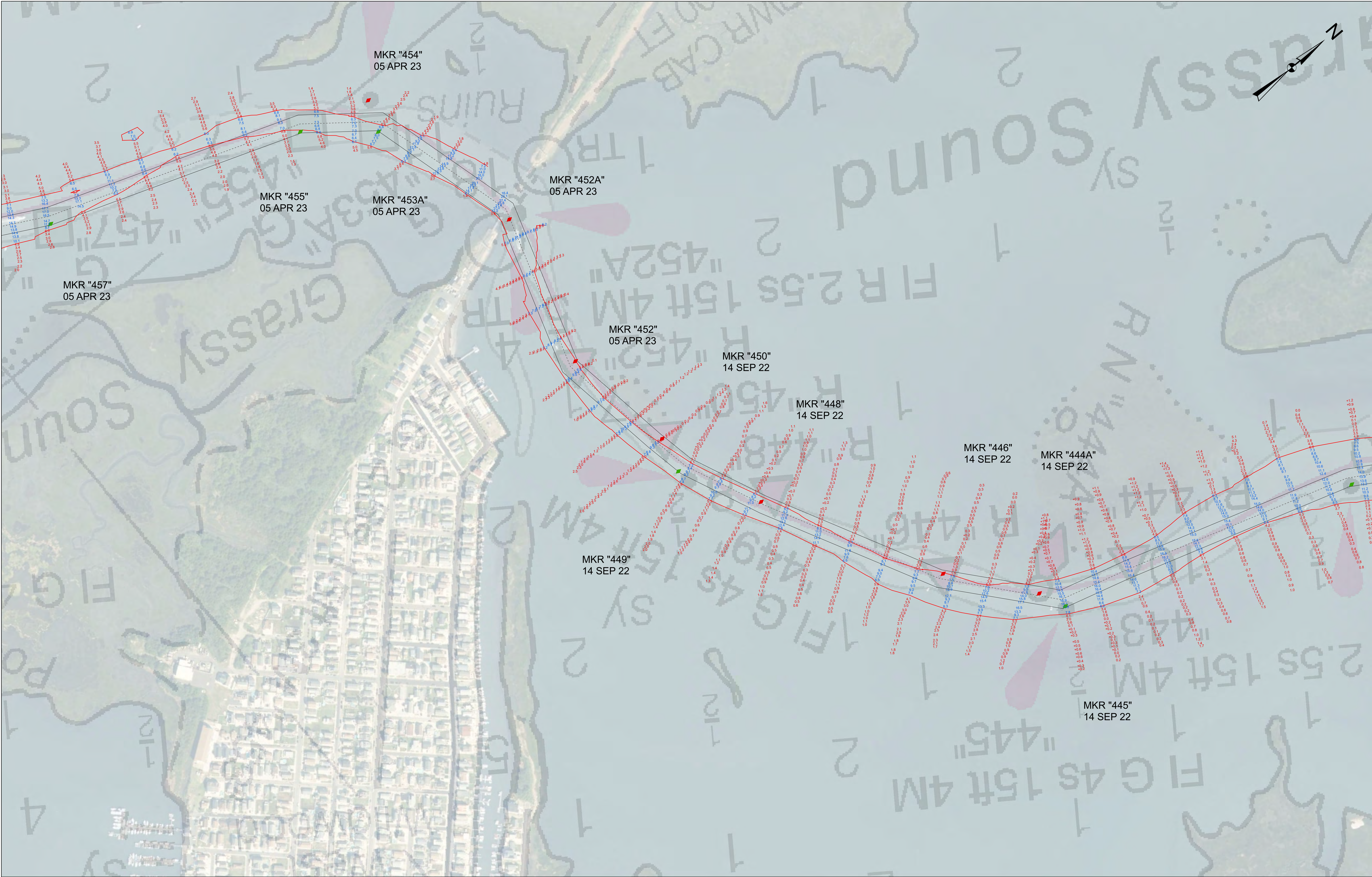
Scale in Feet

200 0 200 400 600

### Legend

-  Shoalest Sounding per Quarter
-  Green Buoy
-  Red Buoy
-  6' Curve of Depth
-  Centerline
-  ChannelFramework





THIS SURVEY MEETS STANDARDS AS OUTLINED IN CORPS OF ENGINEERS' HYDROGRAPHIC SURVEY MANUAL EM1110-2-1003, DATED NOVEMBER 30, 2013 FOR NAVIGATION AND DREDGING SUPPORT SURVEYS.

HORIZONTAL REFERENCE - NAD 83, NEW JERSEY STATE PLANE, ZONE 2900, U.S. FOOT.

VERTICAL REFERENCE - MEAN LOWER LOW WATER, WHICH IS 2.47' BELOW N.A.V.D. 88.

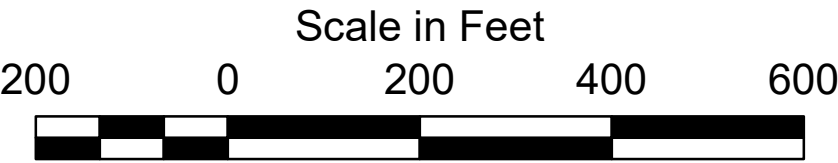
GEOID 09 AND NOAA TIDAL EPOCH: 1983 - 2001 WERE USED. SOUNDINGS ARE EXPRESSED IN FEET AND TENTHS AND REFER TO MEAN LOWER LOW WATER.

THE INFORMATION DEPICTED ON THIS MAP REPRESENT THE RESULTS OF SURVEYS MADE ON THE DATES INDICATED AND CAN ONLY BE CONSIDERED AS INDICATING THE GENERAL CONDITIONS EXISTING AT THAT TIME.

THE POSITIONS OF THE AIDS TO NAVIGATION ARE PROVIDED FOR INFORMATION ONLY, AND SHOULD NOT BE USED FOR NAVIGATION.

THE LIMITS OF THE FEDERAL CHANNEL DEPICT THE MOST CURRENT CHANNEL FRAMEWORK AVAILABLE WHICH CAN ALSO BE DOWNLOADED HERE:  
<http://navigation.usace.army.mil/Survey/Framework>

BASE MAPPING LINEWORK OR ORTHOPHOTOGRAPHY HAS BEEN COMPILED FROM A VARIETY OF SOURCES AND DATES AND IS INTENDED TO PORTRAY GENERAL CHARACTERISTICS OF THE SHORELINE AND OTHER FEATURES. TEMPORAL CHANGES MAY HAVE OCCURRED SINCE THIS DATA SET WAS COLLECTED AND SOME PARTS OF THE DATA MAY NO LONGER BE AN ACCURATE REPRESENTATION OF THE SURFACE CONDITIONS.



- Legend**
- Shoalest Sounding per Quarter
  - Green Buoy
  - Red Buoy
  - 6' Curve of Depth
  - Centerline
  - ChannelFramework





MKR #425 to MKR #427 -- 06 JUN 23  
 MKR #427 to MKR #436 -- 21 DEC 20  
 MKR #436 to MKR #443 -- 16 FEB 21  
 MKR #443 to MKR #452 -- 14 SEP 22  
 MKR #452 to MKR #463 -- 05 APR 23

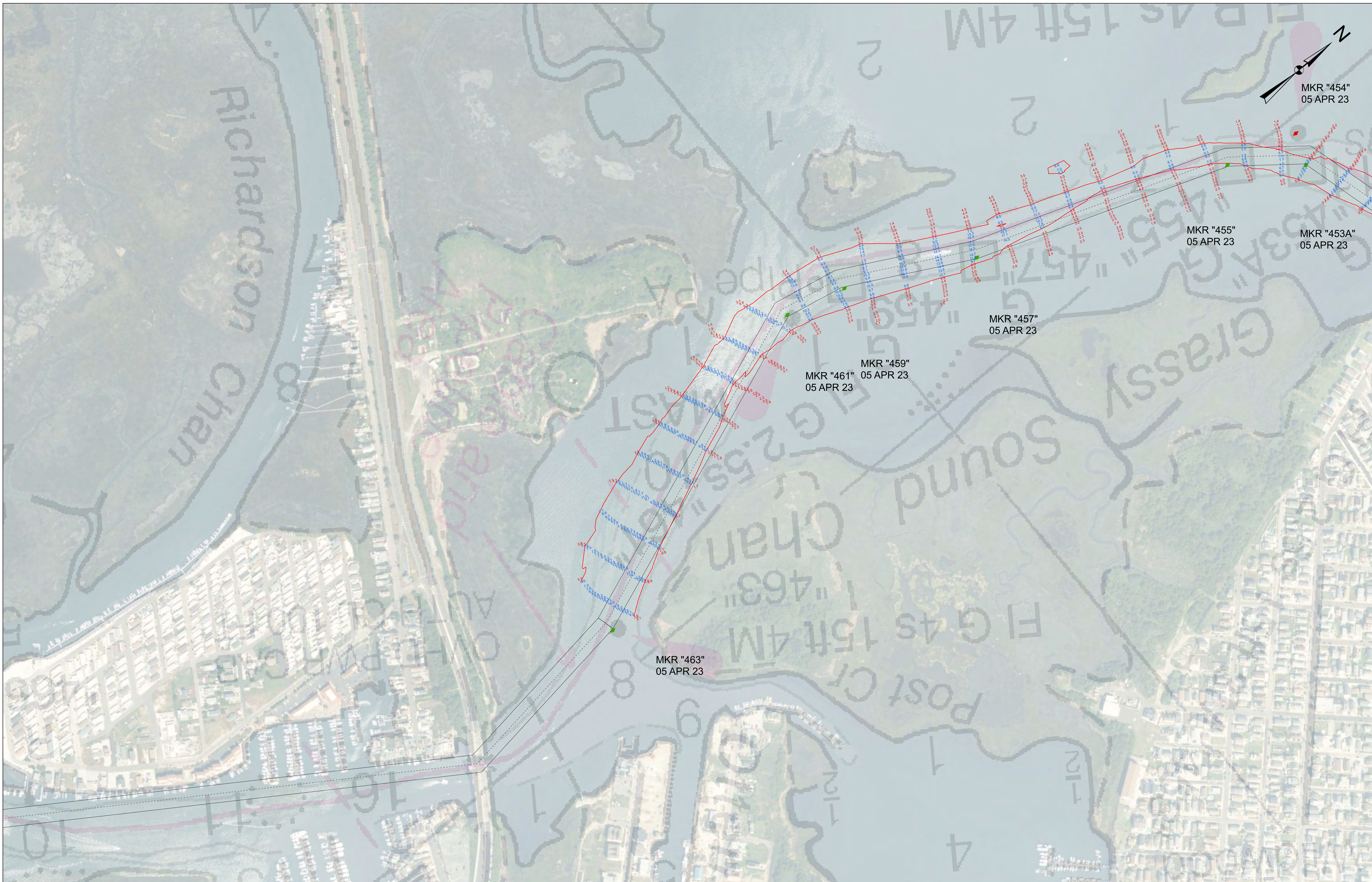
**DISCLAIMER**

The following information is provided for general information only. It is not intended to constitute an offer of insurance or any other financial product. The information is not intended to be relied upon in making any investment decision. The information is not intended to be used as a basis for any investment decision. The information is not intended to be used as a basis for any investment decision. The information is not intended to be used as a basis for any investment decision.

|   |                           |
|---|---------------------------|
| <p align="center"><b>U.S. ARMY CORPS OF ENGINEERS</b><br/>PHILADELPHIA DISTRICT</p> |                           |
| Drawing No.   | Surveyed By:              |
| Plot Scale:   | Plotted By:               |
| Approved:   | E. Anthony<br>Checked By: |
| Chief Survey Section  |                           |

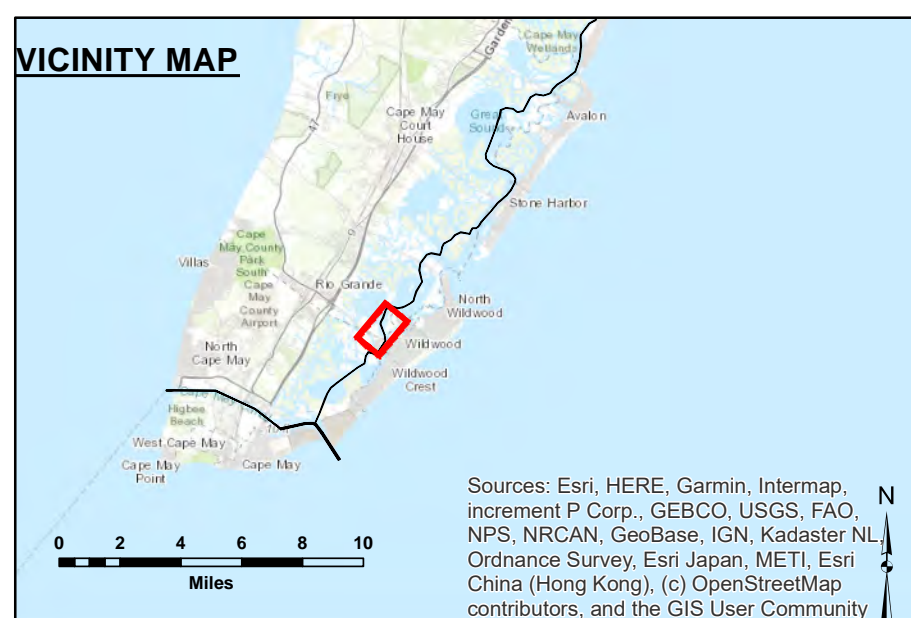
NEW JERSEY INTRACOASTAL WATERWAY  
MKR #425 TO MKR #463  
EXAMINATION

IW-13



### Legend

- Shoalest Sounding per Quarter
- ◆ Green Buoy
- ◆ Red Buoy
- 6' Curve of Depth
- Centerline
- ChannelFramework



THIS SURVEY MEETS STANDARDS AS OUTLINED IN CORPS OF ENGINEERS' HYDROGRAPHIC SURVEY MANUAL EM11110-2-1003, DATED NOVEMBER 30, 2013 FOR NAVIGATION AND DREDGING SUPPORT SURVEYS.

HORIZONTAL REFERENCE - NAD 83, NEW JERSEY STATE PLANE, ZONE 2900, U.S. FOOT.

VERTICAL REFERENCE - MEAN LOWER LOW WATER, WHICH IS 2.47' BELOW N.A.V.D. 88.

GEOID 09 AND NOAA TIDAL EPOCH: 1983 - 2001 WERE USED. SOUNDINGS ARE EXPRESSED IN FEET AND TENTHS AND REFER TO MEAN LOWER LOW WATER.

THE INFORMATION DEPICTED ON THIS MAP REPRESENT THE RESULTS OF SURVEYS MADE ON THE DATES INDICATED AND CAN ONLY BE CONSIDERED AS INDICATING THE GENERAL CONDITIONS EXISTING AT THAT TIME.

THE POSITIONS OF THE AIDS TO NAVIGATION ARE PROVIDED FOR INFORMATION ONLY, AND SHOULD NOT BE USED FOR NAVIGATION.

THE LIMITS OF THE FEDERAL CHANNEL DEPICT THE MOST CURRENT FRAMEWORK AVAILABLE WHICH CAN ALSO BE DOWNLOADED HERE:

<http://navigation.usace.army.mil/Survey/Framework>

BASE MAPPING LINEWORK OR ORTHOPHOTOGRAPHY HAS BEEN A VARIETY OF SOURCES AND DATES AND IS INTENDED TO PORTRAY CHARACTERISTICS OF THE SHORELINE AND OTHER FEATURES. TEMPORAL CHANGES MAY HAVE OCCURRED SINCE THIS DATA SET. SOME PARTS OF THE DATA MAY NO LONGER BE AN ACCURATE REFERENCE TO SURFACE CONDITIONS.

